

“

My experience of joining ASPRI over the last few years has proved to be enjoyable and meaningful one. It gives you in road into the process industry as a whole, by ASPRI actively engaging members and all other stakeholders through fun and purposeful events. From multiple networking sessions, industry updates, dialogues and seminars, there are many opportunities to stay connected to the industry and grow as a person.

**Mr Kenny Lee**  
Director of Petracarbon Pte Ltd



“

From organising internal improvement seminar such as HR, Productivity and Safety Workshop to external events like Overseas Trade Missions and Networking events, ASPRI has always been true to its objective of helping the members. The Association will continue to be an important asset for the industry for a long time to come.

**Mr Ryan Ong**  
Director of Chino Engineering Construction Pte Ltd

## Contact Details

☎ 6560 5051

🌐 [www.aspri.com.sg](http://www.aspri.com.sg)

📍 9 Jurong Town Hall Road  
#04-11 Trade Association Hub  
Jurong Town Hall  
Singapore 609431



**ASPRI**

Connect · Engage · Grow

towards **A Sustainable PRocess Industry**

Shape the future  
of the Process Industry, together  
Be part of our extensive network



## About ASPRI

Established in 1997, the Association of Process Industry (ASPRI) is a membership-based trade association that represents the interest of companies in the Process Construction and Maintenance (PCM) sector.

This includes the petroleum, petrochemical, specialty chemicals and pharmaceutical sectors.

### OUR VISION

To be a Visible and Credible Partner in the Process Industry

### OUR MISSION

Connect various Industry Stakeholders  
Engage Industry Players in strategic partnerships  
Facilitate Growth Opportunities

## Be part of ASPRI

ASPRI is open to all companies eager to both contribute to common goals, as well as benefit from our initiatives and events

### Business Networking

Enjoy exclusive invitation to our growing list of industry and business networking events.

- ✓ Process Industry dinners & celebrations
- ✓ Business networking activities organised in co-operation with other Trade Associations & Chambers (TACs)
- ✓ Discounted rates to participate in various industry trade exhibitions and conferences
- ✓ Overseas business study missions at concessionary rates

### Knowledge Transfer

ASPRI seeks out capability development opportunities and offer updated information.

- ✓ Benefit from industry upgrading initiatives embarked by the Process Construction & Maintenance Management Committee (PCMMC) and Productivity Council (PC)
- ✓ Gain access to a library of information that includes Productivity Improvements
- ✓ Exclusive invitation to curated workshops and seminars
- ✓ Opportunities to discover and understand digitalisation tools

### Industry Representation

ASPRI works effectively to represent members' interests at various levels of the legislative process.

- ✓ Qualify for the opening of Process CPF account – get to employ PCM Work Permit Holders (WPHs) (Corporate Members only)
- ✓ Qualify for low levy conversion for your foreign workers (Corporate Members only)
- ✓ Eligibility to house your PCM WPHs with Jurong Island (JI) passes at ASPRI-Westlite Dormitory – Papan (Corporate Members only)
- ✓ Have the right to vote at all general meetings and hold offices in the Executive Council (Corporate Members only)
- ✓ Obtain regular updates on industrial information & assistance programmes including policy changes
- ✓ Address your concerns through closed-door dialogue sessions

### Training

Through our training division, ASPRI-Institute of Process Industry (ASPRI-IPI),

- ✓ Members can enjoy discounts on selected training courses and rental of facilities at ASPRI-IPI
- ✓ Corporate members who house employees at ASPRI- Westlite Dormitory-Papan will get to enjoy up to 48 hours of heavily subsidised training courses

Details can be found at <http://ipi.org.sg>



## Our Membership

Membership is open to companies that are in the Process Industry. There are two types of membership:

1

### CORPORATE MEMBERSHIP

Companies which are involved in PCM activities

One-time Entrance Fee: \$4,000  
Annual Subscription Fees: \$1,200

2

### ASSOCIATE MEMBERSHIP

Partners / companies who are indirectly associated with the process industry such as vendors, equipment supplies, banks, etc.

One-time Entrance Fee: \$1,800  
Annual Subscription Fees: \$1,080

[ All fees subject to prevailing GST rate ]

## For enquiries

➤ Head to our website: [www.aspri.com.sg](http://www.aspri.com.sg) for more information on membership

➤ Please contact Mr Kenneth and Ms Azian at:

☎ 6560 5051

✉ [kenneth@aspri.com.sg](mailto:kenneth@aspri.com.sg), [azian@aspri.com.sg](mailto:azian@aspri.com.sg)

## ASSOCIATION OF PROCESS INDUSTRY (ASPRI) AND ASPRI-INSTITUTE OF PROCESS INDUSTRY (ASPRI-IPI)



Process Industry



Plant Construction



Plant Maintenance



Petroleum



Fuel

Petrochemical



Paint

Pharmaceutical

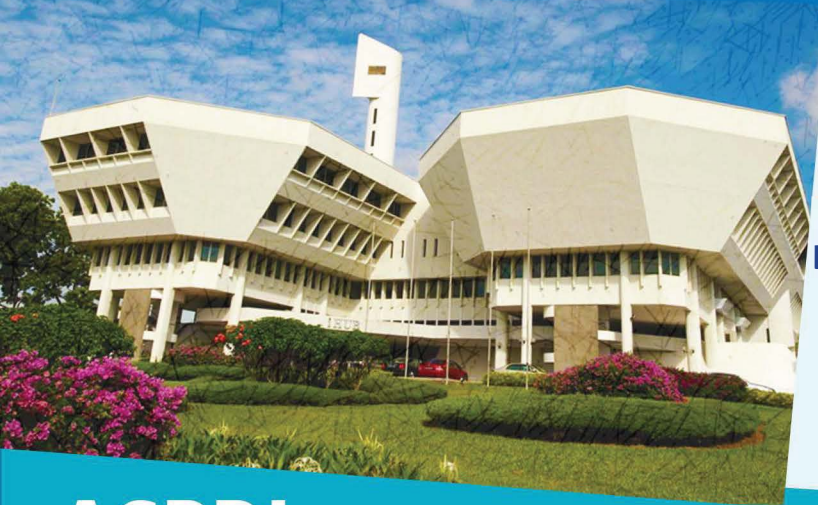


Medicine

Specialty Chemical



Engine Additive



## ASPRI

### ESTABLISHMENT



**2001**  
Changed its name to ASPRI

**1997**  
(Formerly known as PICAS)

### VISION

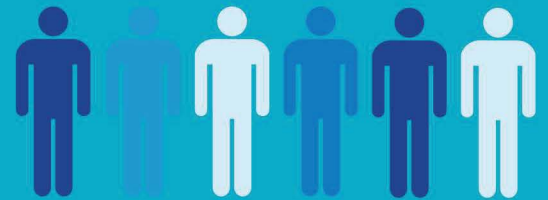
To be a **Visible** and **Credible Partner** in the Process Industry

### MISSION

- Connect various Industry Stakeholders
- Engage Industry Players in strategic partnerships
- Facilitate Growth Opportunities

### MEMBERSHIP

Over 500 member companies with core trades such as:



- Welding / Testing & Inspection / Non-Destructive Testing
- Equipment/ Tools Supplies
- Painting and Blasting
- Scaffolding
- Mechanical
- Plant Civil

## ASPRI-IPI

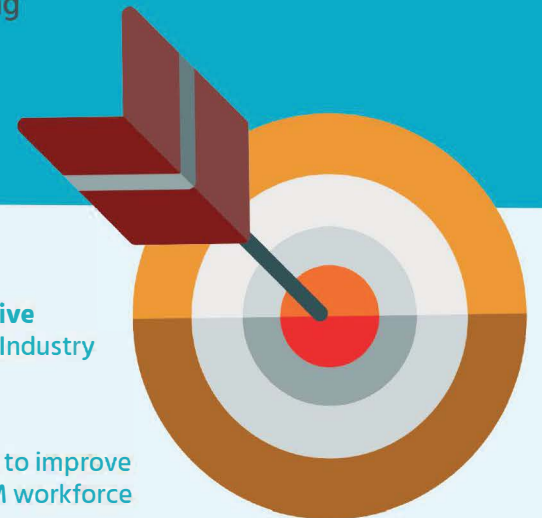
ASPRI-IPI, a training division of ASPRI, established in 2008 with the assistance of Workforce Singapore (WSG), formerly Singapore Workforce Development Agency (WDA)

### VISION

A **Safer** and more **Productive** workforce for the Process Industry

### MISSION

To deliver quality training to improve the livelihoods of the PCM workforce



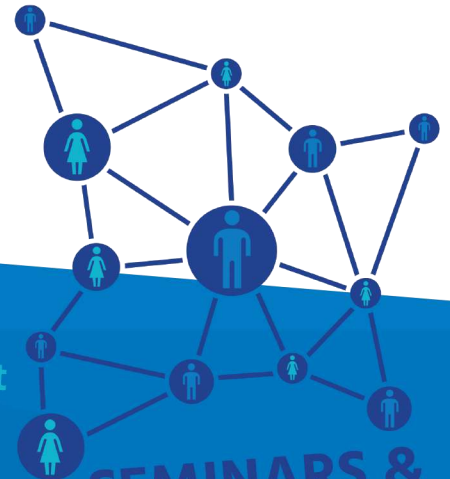
### STAFF STRENGTH

≈ 32 Staff + 50 Associate Trainers



CONNECT AND ENGAGE

# CONNECT WITH VARIOUS KEY INDUSTRY STAKEHOLDERS



## NETWORKING

Prosperity Lohei Dinner

Process Industry Chillout Night



## SEMINARS & WORKSHOPS

Seminars



# ENGAGE

TO PROPEL INDUSTRY GROWTH WITH KEY ACTIVITIES

### Training

- One-Stop Training Centre for the industry
- More than 85 courses
- Development of WSQ Courses for the 13 Skillsets

### Plant Owners Engagement

- Productivity Improvement
- Safety Workshops
- Training Collaborations

### Members Engagement

- Process Industry Prosperity Lohei Dinner
- Annual General Meeting
- Process Industry Chillout Night
- 7th Lunar Month Festival Celebration

### PCMMC

- ASPRI-Westlite Dormitory - Papan
- 3-years Initiative with CII
- Productivity Council

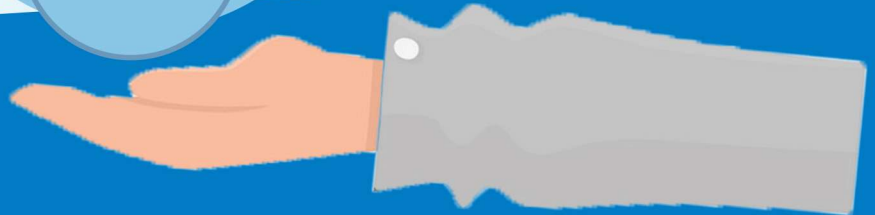


### Government Engagement

- Exclusive dialogues with various government agencies
- Internationalisation and Productivity Initiatives
- Garner feedbacks for Policy Making

### Institute of Higher Learnings (IHLs)

- Singapore Polytechnic (SP)
- Institute of Technical Education (ITE)



GROW AND ASPRI-WESTLITE DORMITORY – PAPAN

# GROW: FACILITATE OPPORTUNITIES FOR BUSINESS GROWTH

Overseas Business Mission Trips



## Live, Learn & Play

### SPECIFICATIONS

2 blocks 18-storey accommodation housing **7,900** workers

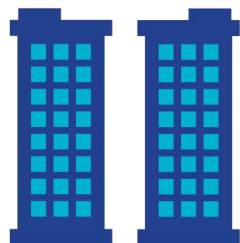
- Recreational facilities and commercial spaces (e.g. supermarket, canteen, laundry, dentist, barber, mobile-shop and ATM)

- 3-storey ASPRI Integrated Training Centre (AITC) with training facilities, office and auditorium



### DORMITORY MATTERS

Total **494** units  
(16 beds per unit, 7,900 bed-spaces)



## ASPRI-IPI AND ASPRI INTEGRATED TRAINING CENTRE (AITC)

### ASPRI-IPI

A "One-Stop" integrated training provider that supports the Process, Construction and Maintenance (PCM) sector in Process-related courses, which includes:

- Regulatory mandatory courses;
- Plant owners specific safety orientation courses;
- Contractors in-house courses;
- MOM higher skilled R1 low levy courses;
- Quality and productivity courses; and
- IT & literacy courses.



### ASPRI INTEGRATED TRAINING CENTRE (AITC)

# 40,000 sqft

Managed by ASPRI-IPI

#### Facilities:

- 8 classrooms
- 2 computer labs
- 4 workshops
- Lecture hall
- Auditorium



#### Curriculum development & design

- Skillsfuture Singapore (SSG) appointed curriculum consultant, developed 14 National Competency Standards for the Process Industry

Appointed training provider to upskill 7,900 Process workers residing in ASPRI-Westlite Dormitory - Papan since Sep 2016.



#### ASSOCIATION OF PROCESS INDUSTRY (ASPRI)

9 Jurong Town Hall Road #04-11 Trade Association Hub, Jurong Town Hall, Singapore 609431  
Tel : 65 6560 5051 | Fax: 65 6560 9692 | [www.aspri.com.sg](http://www.aspri.com.sg)

#### ASPRI-INSTITUTE OF PROCESS INDUSTRY (ASPRI-IPI)

5D Jalan Papan #01-38 Singapore 619421  
Tel : 65 6795 5700 | [www.ipi.org.sg](http://www.ipi.org.sg)

