



Connect • Engage • Grow

towards **A Sustainable PR**ocess Industry

Industry Townhall on
Enhanced R1 Framework

16 Jan 2026
10.00am to 11.00am
Zoom Platform

Agenda

1. Message from President, ASPRI 15th Executive Council
2. Recap of Enhanced R1 Framework
3. Recap of Workers Credentialing System (WCS)
4. WCS Membership Portal Updates
5. Q&A

Message from President

President, ASPRI 15th Executive Council
Mr. Danny Chua

Message from President

ASPRI's role:

1. Formation of Workplace Training Centre (WTC)
2. Workers Credentialing System (WCS)

Message from President

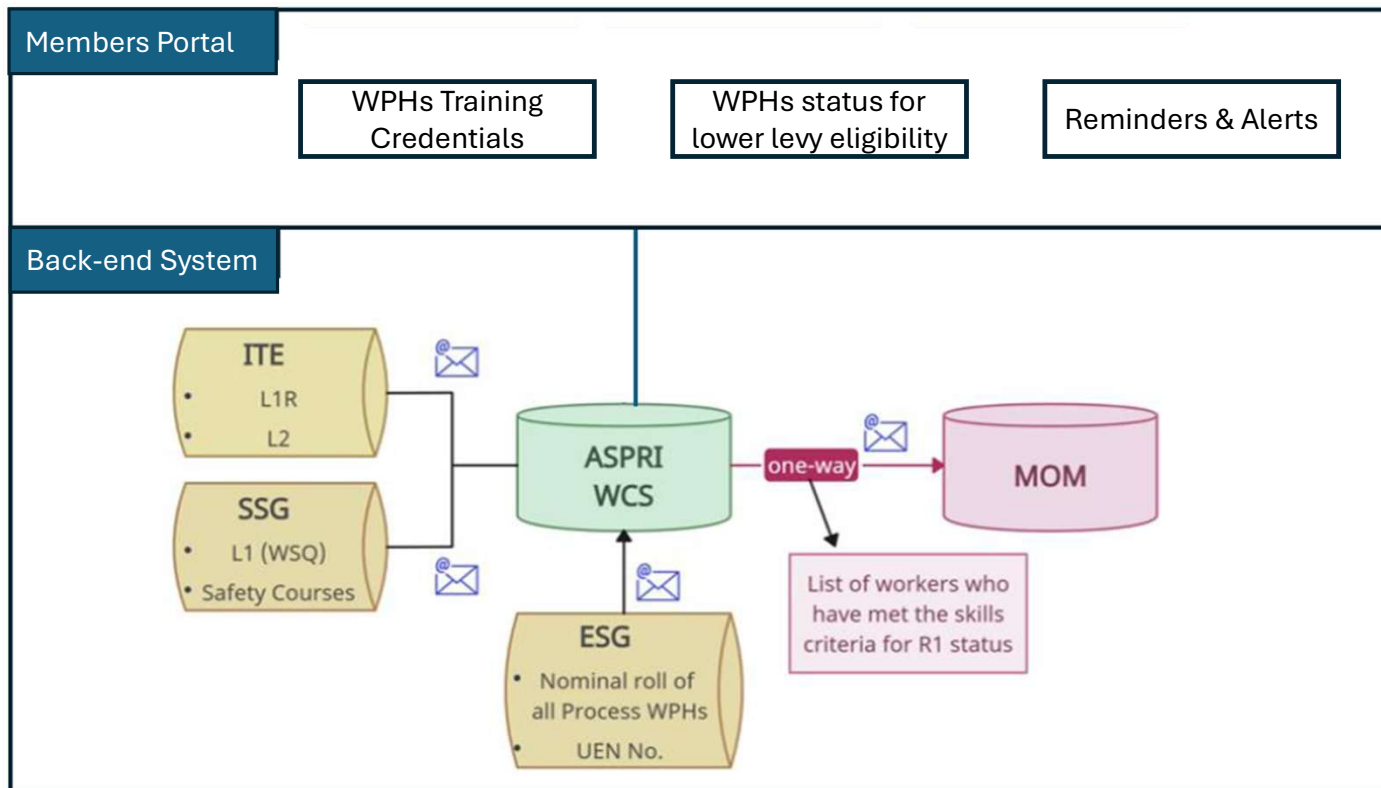
WCS:

Track and Consolidate Worker's Training Data

1. View your worker's training & credential status in 1 place
2. Receive advance alerts on expiring certifications

Message from President

WCS:



Track and Consolidate Worker's Training Data

1. View your worker's training & credential status in 1 place
2. Receive advance alerts on expiring certifications

Message from President

Nature of WCS:

Conduit system

1. Receives, aggregates and organizes training & credential data from multiple official data sources

Message from President

Dedicated point of support:

enhancedr1@aspri.com.sg



Recap: Enhanced R1 Framework Overview

The Enhanced R1 framework has been implemented since 1 January 2026

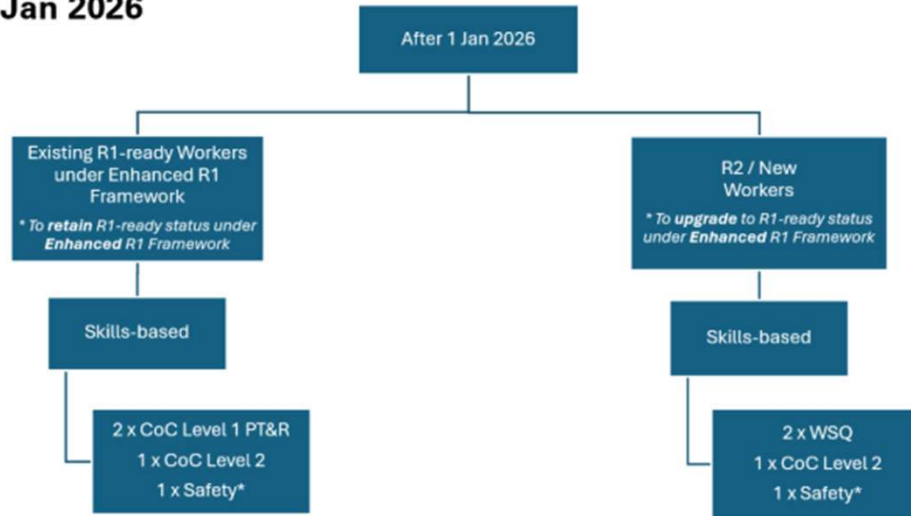
| Revised Pathway | Enhanced R1 framework | | |
|-----------------|---|---|---|
| 1 | <p>Skills Qualifications (4 courses)</p> <ul style="list-style-type: none"> •2 x Level 1 WSQ courses* •1 x Level 2 Deep-skilling course* •1 x Safety course <p>*All R1 WPHs will be required to undergo Proficiency Test and Refreshers (PT&R) for the L1 and L2 courses every 2 years to retain their R1 status.</p> | + | Fixed Monthly Salary (FMS) \geq \$1,200 |
| 2 | | + | Period of Employment (POE) \geq 4 years |
| 3 | | + | Productivity Certification Framework (PCF) ^[1] Rating of at least Bronze |

[1] The PCF is a certification framework developed by the Productivity Council which grades a company based on four categories, with different weightages: People (35%), Process (35%), Tools (20%) and Data Quality (10%).

Enhanced R1 Skills Qualifications Criteria (After 01 Jan 2026)

Depending on your workers' existing skills qualifications attained, please see below for additional skills qualifications needed to meet the Enhanced R1 skills qualifications.

Enhanced R1 Framework Criteria (Skills Qualifications) - After 1 Jan 2026



Important Notes

Under the Enhanced R1 Framework, w.e.f 1 Jan 2026:

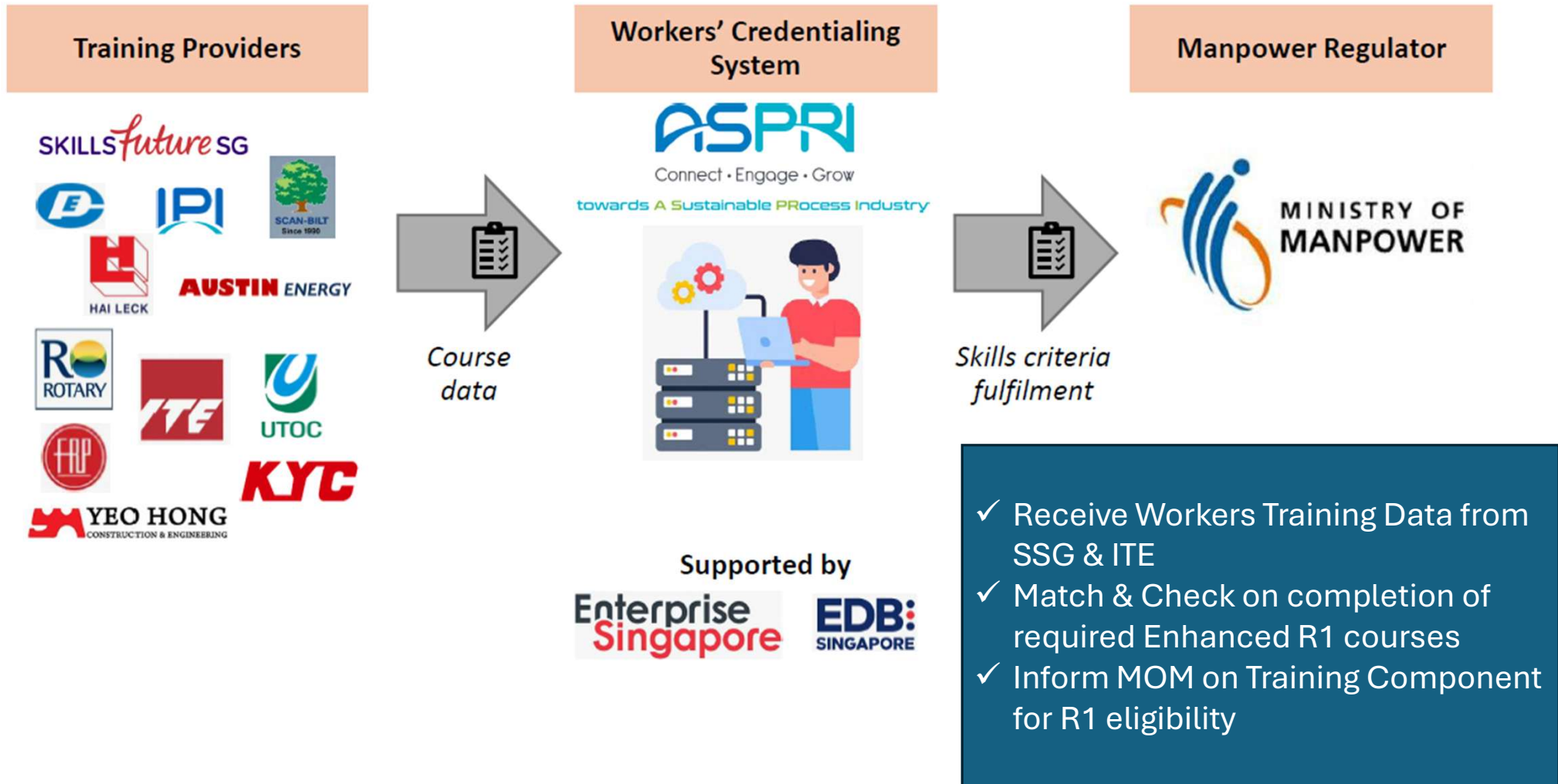
- All Skills Courses (WSQ and CoC) have a validity of **24 months** (from the course pass date)
- For **R2/New Workers**, if the validity of your skills course has expired, you may take either a brand new WSQ or an associated PT&R.
- Composite Assessment for Generic Manufacturing (CGM) will be alternative pathway to attain 1 x WSQ and 1 x Safety.
- Safety course is once-off and there is no refresher required.

Under the Enhanced R1 Framework, W.E.F. 01 Jan 2026,

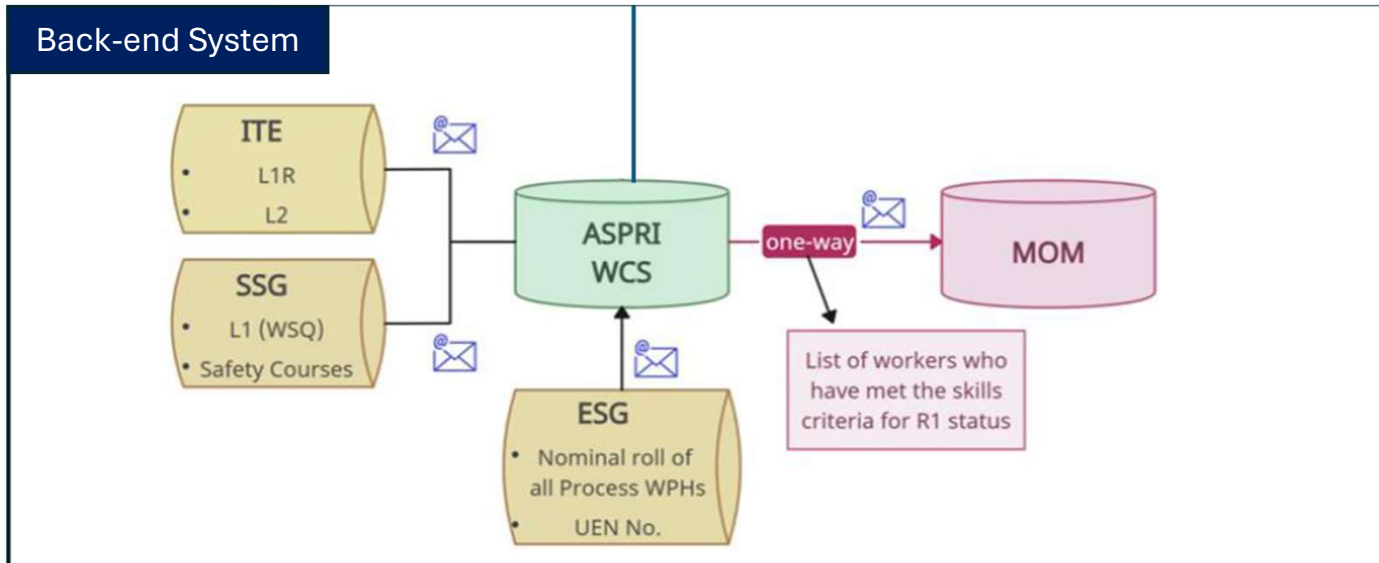
1. All **skillset** courses (Level 1 WSQ/CoC, Level 2 CoC) have a **validity of 24 months from the course pass date**.
2. For courses completed before 1 January 2026, only those completed on or after 1 April 2024 are recognised as having active validity. This cut-off date was applied during the Enhanced R1 Framework transition period prior to 1 January 2026.
3. For **R2/new WPHs**, if the validity of your skills course has expired, worker may take either a brand new Level 1 WSQ or an associated CoC PT&R.
4. **CGM / Composite Assessment for Generic Manufacturing (Process)** will be an alternative pathway to attain one Level 1 WSQ skillset and one WSQ Safety
5. Safety course is once-off and there is no refresher required.
6. In addition to skills qualifications, workers must meet secondary criteria to qualify for R1 status under the Enhanced R1 framework. These criteria include fixed monthly salary (FMS), period of employment (POE), or Productivity Certification Framework (PCF)

*For full details, please refer to ASPRI Enhanced R1 Microsite: <https://aspri.com.sg/enhancedr1framework/>

Recap: Workers Credentialing System (WCS)



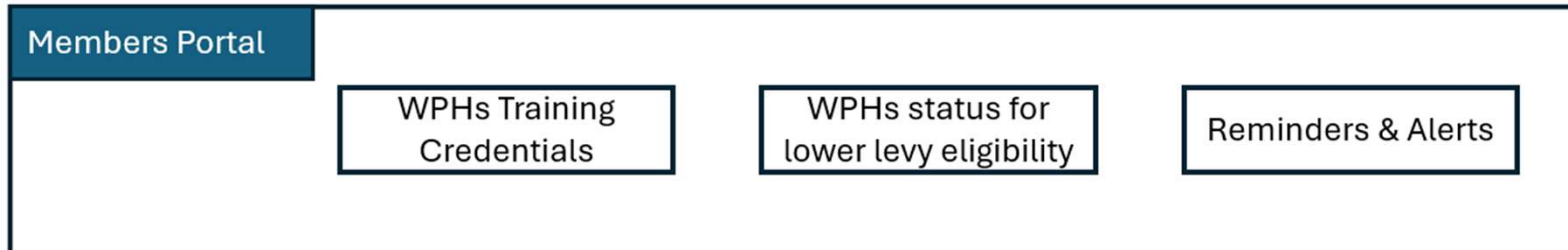
WCS: System Overview



System Objective

- ✓ Receive Workers Training Data from SSG & ITE
- ✓ Match & Check on completion of required Enhanced R1 courses
- ✓ Inform MOM on WPHs who have completed the Training Component for R1 eligibility

WCS: System Overview (Members Portal)



System Objective

To allow members to:-

- ✓ Receive notifications of WPHs whose courses are expiring in 6 months
- ✓ Log-in to a user portal to view training credentials of the UEN's WPHs
 - Up to 2 users per UEN (secure log-in)
 - View WPHs for lower levy eligibility (ER1-ready)
 - View of WPHs whose courses are expiring in 6 months
- ✓ Export Reports



https://wcs-uat.acspl.com.sg/CompanyAdmin|

AI Mode

Guest

https://wcs-uat.acspl.com.sg/CompanyAdmin

https://wcs-uat.acspl.com.sg/CompanyAdmin - Google Search

You're browsing as a Guest

Pages that you view in this window won't appear in the browser history and they won't leave other traces, like cookies, on the computer after you close all open Guest windows. Any files that you download will be preserved, however.

[Learn more](#)

WCS: System Overview (WCS Members Portal)

Registration for ASPRI Workers Credentialing System (WCS) Members Portal



<https://forms.office.com/r/wQbV6aVJuW>

Important Notes:

- Only **up to 2** registered users are allowed **per UEN**.
- Due to PDPA concerns, **only registered users are allowed access** to the Members Portal.
- We strongly encourage the registered user to be from **Senior Management**, or individuals with **oversight on workforce planning, HR, training or compliance**.

⚠ Completed registrations received before Thu, 22 January 2026 (12 noon) will receive access the WCS Members Portal by end January 2026.

Please note that registrations received after Thu, 22 January 2026 (12 noon) will only receive access to the WCS Members Portal in mid Feb 2026.

Q&A